



BEFORE YOU START!

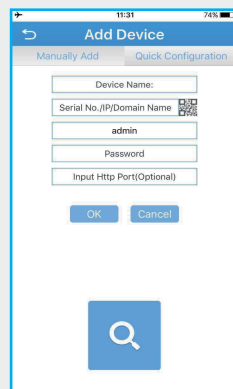
1. Make sure you have a router and high-speed Internet access(not included);
2. Connect your router using an Ethernet cable;
3. Upgrade your client software and mobile app to the latest version;
4. Please note that an upload speed of 1Mbps is required for remote video streaming.

1A iPhone

- a Install the free XMEye app from APP Store. Tap the XMEye icon to open the app.
- b Tap Register to create a new account(Needing to input the User name and Password).

c Tap “+” **Device List**

d Configure the following



- 1 Device Name: Input a name for your system on your own.
- 2 Tap to scan the QR code on the start up wizard screen to get Serial No
- 3 User name: admin(default)
- 4 Password:null(default)

e Tap OK to add your device to app

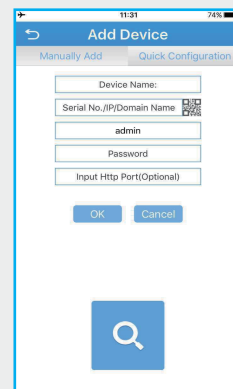
f The app opens in Device List screen. Tap the device you want to view, then you get the streams video from all connected cameras.

1B iPad

- a Install the free XMEye app from APP Store. Tap the XMEye icon to open the app.
- b Tap Register to create a new account(Needing to input the User name and Password).

c Tap “+” to add a new device. **Device List**

d Configure the following



- 1 Device Name: Input a name for your system on your own.
- 2 Tap to scan the QR code on the start up wizard screen to get Serial No
- 3 User name: admin(default)
- 4 Password:null(default)
- 5 Http Port: 3456(default)

e Tap OK to add your device to app

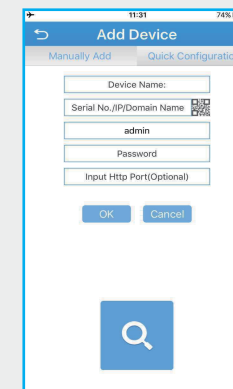
f The app opens in Device List screen. Tap the device you want to view, then you get the streams video from all connected cameras.

1C Android

- a Install the free XMEye app from APP Store. Tap the XMEye icon to open the app.
- b Tap Register to create a new account(Needing to input the User name and Password).

c Tap “+” to add a new device. **Device List**

d Configure the following



- 1 Device Name: Input a name for your system on your own.
- 2 Tap to scan the QR code on the start up wizard screen to get Serial No
- 3 Http Port: 3456(default)
- 4 User name: admin(default)(when Advanced is checked))
- 5 Password:null(default)(when Advanced is checked)

e Tap OK to add your device to app

f The app opens in Device List screen. Tap the device you want to view, then you get the streams video from all connected cameras.

HOW TO USE



Find your Serial No(SN)

The Serial No is on the start up wizard screen when your device is power on.

Connecting on PC

a

Download and install the client software.

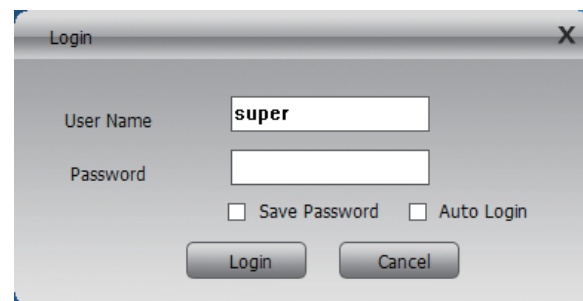
- 1 You can get and install the Client software CMS from the CD inside the package.
- 2 Download and install the Client software CMS from WWW.sanncegroup.com/support.

b

Once installation is finished, double-click the CMS  on the desktop or Applications list.

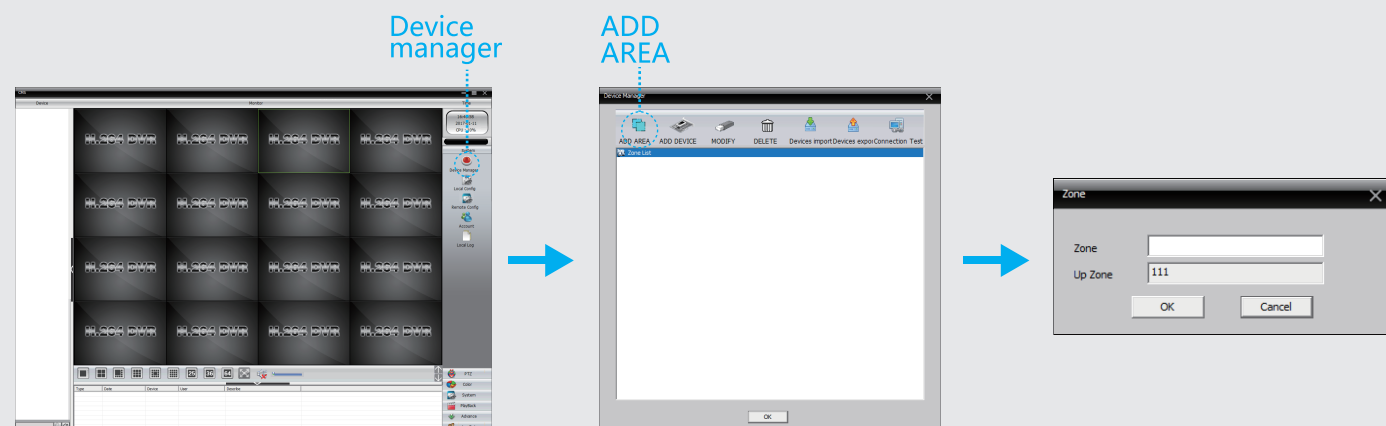
c

Log in the Client Software using the user name(default: super) and password(default: null).



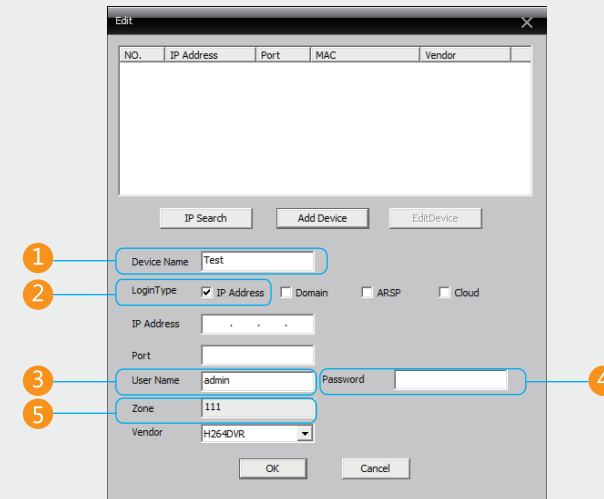
d

Click System->Device manager->ADD AREA



e

Click ADD DEVICE



- 1 **Device Name:** Set a name for your device.
- 2 **Login Type:** IP Address(Make sure your device have connected to the Internet);Domain(Make sure your device have connected to the Internet and has a effective domain); ARSP & Cloud (Get Serial No onthe start up wizard screen).
- 3 **User name:** admin(default)(when Advanced is checked)
- 4 **Password:** null(default)(when Advanced is checked)
- 5 **Zone:** As you have created.

f

Click OK to add you device.



Troubleshooting

If you are having trouble connecting, try the following.

- 1 Restart the DVR using the power switch.
- 2 Ensure the DVR is connected to the router using an Ethernet cable and then restart the DVR.
- 3 Double check the Username, Password and Client Port.