

Regulatory Information

FCC compliance

FCC compliance: This equipment has been tested and found to comply with the limits for a Class B digital device, pursuant to part 15 of the FCC Rules. These limits are designed to provide reasonable protection against harmful interference in a residential installation. This equipment generates, uses and can radiate radio frequency energy and, if not installed and used in accordance with the instructions, may cause harmful interference to radio communications. However, there is no guarantee that interference will not occur in a particular installation. If this equipment does cause harmful interference to radio or television reception, which can be determined by turning the equipment off and on, the user is encouraged to try to correct the interference by one or more of the following measures:

- Reorient or relocate the receiving antenna.
- Increase the separation between the equipment and receiver.
- Connect the equipment into an outlet on a circuit different from that to which the receiver is connected.
- Consult the dealer or an experienced radio/TV technician for help.

EU Conformity Statement

This product and -if applicable -the supplied accessories too are marked with "CE" and comply therefore with the applicable harmonized European standards listed under the EMC Directive 2004/108/EC, the RoHS Directive 2011/65/EU.

2012/19/EU (WEEE directive): Products marked with this symbol cannot be disposed of as unsorted municipal waste in the European Union. For proper recycling, return this product to your local supplier upon the purchase of equivalent new equipment, or dispose of it at designated collection points. For more information see: www.recyclethis.info

2006/66/EC (battery directive): This product contains a battery that cannot be disposed of as unsorted municipal waste in the European Union. See the product documentation for specific battery information. The battery is marked with this symbol, which may include lettering to indicate cadmium (Cd), lead (Pb), or mercury (Hg). For proper recycling, return the battery to your supplier or to a designated collection point. For more information see: www.recyclethis.info

Safety Instruction

These instructions are intended to ensure that user can use the product correctly to avoid danger or property loss. The precaution measure is divided into [Warnings] and [Cautions].

Warnings: Serious injury or death may occur if any of the warnings are neglected.
Cautions: Injury or equipment damage may occur if any of the cautions are neglected.

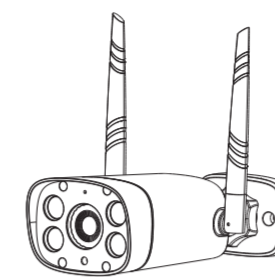
Warnings: Follow these safeguards to prevent serious injury or death.	Cautions: Follow these precautions to prevent potential injury or material damage.

Preventive and Cautionary Tips

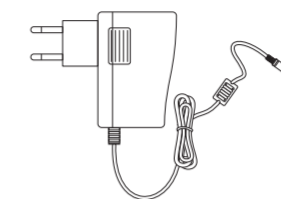
Before connecting and operating your device, please be advised of the following tips:

- Ensure unit is installed in a well-ventilated, dust-free environment.
- Unit is designed for indoor use only.
- Keep all liquids away from the device.
- Ensure environmental conditions meet factory specifications.
- Ensure unit is properly secured to a rack or shelf. Major shocks or jolts to the unit as a result of dropping it may cause damage to the sensitive electronics within the unit.
- Use the device in conjunction with an UPS if possible.
- Power down the unit before connecting and disconnecting accessories and peripherals.
- A factory recommended HDD should be used for this device.
- Improper use or replacement of the battery may result in hazard of explosion. Replace with the same or equivalent type only. Dispose of used batteries according to the instructions provided by the battery manufacturer.

1. What's in the box



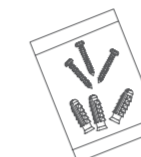
Camera



Power Adapter

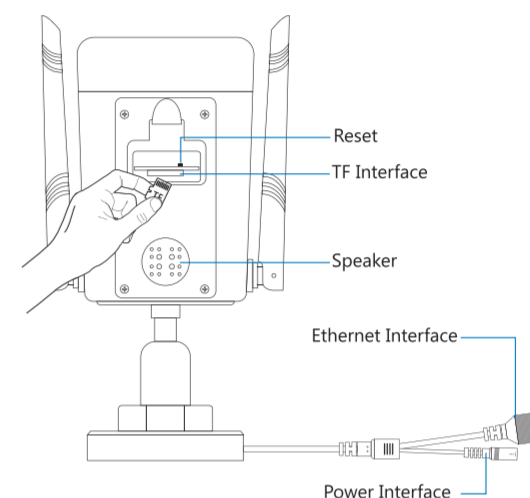
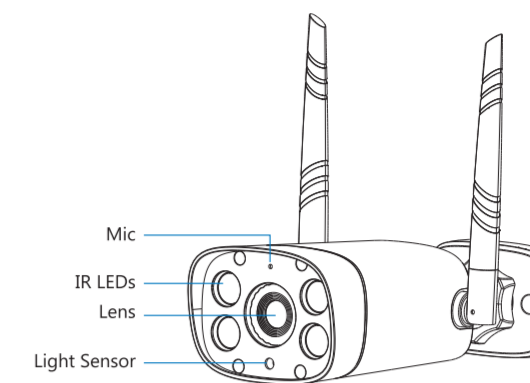


User Manual



Mounting Screws Bag

2. Overview



3. Preparations before Adding the Device:

- Please confirm your Wi-Fi network is **DHCP** enabled and it is **2.4GHz** working band (The device does not support 5GHz band). And please ensure the encryption mode is **WPA, WPA2, SSID** and there is no special characters in the password.
- Please confirm your mobile phone is connected to this Wi-Fi and can access the Internet normally.
- Search "**AI VIEW**" in App Store or Google Play, then download and install it on your phone.
- Power on the device, and it will boot up automatically.

4. APP Account Registration (take iPhone as an example here)

- Open the app, click "**sign up**" and click "**Agree**", input your Email address or mobile phone number, then click "**Next**" and wait several seconds until you receive the verification message or the email. (Figure 1)
- Please input the verification code to the specified area and click "**Next**" to set the password of your account, then click "**Next**" to complete the account registration and login. (Figure 2)

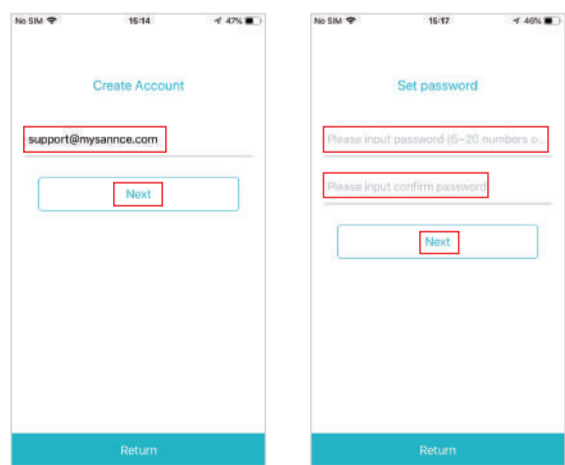


Figure 1

Figure 2

5. Adding the Device

- Open the APP, click the "+" button. (Figure 3)
- Scan the QR code on the device's sticker. If the QR code is missing, please choose "**No qr code, click add the device directly**", choose "**wireless hotspot connection**". (Figure 4~5)
- Follow the prompts to enter your phone's system settings interface, enter Wi-Fi settings interface. (Figure 6)
- Find the device's hotspot and connect it (the hotspot name starts with HSIPC, default password is 1234578), then return to the APP. (Figure 7~8)
- Note: If the device's hotspot is not found, please long press the device's reset button for more than 5 seconds to restart the device.**
- Set your device's password, then click "**OK**". (Figure 9)
- Click "**Go to connect WiFi**", to configure WiFi network. (Figure 10)
- Select your Wi-Fi and input the correct password, then click "**OK**", it will automatically configure WiFi network, waiting for a moment. (Figure 11)
- Input the device name and click "**Save**". (Figure 12)
- Now you can start live preview. (Figure 13)

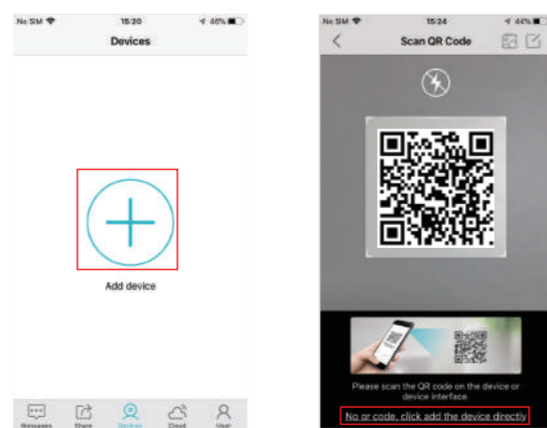


Figure 3

Figure 4

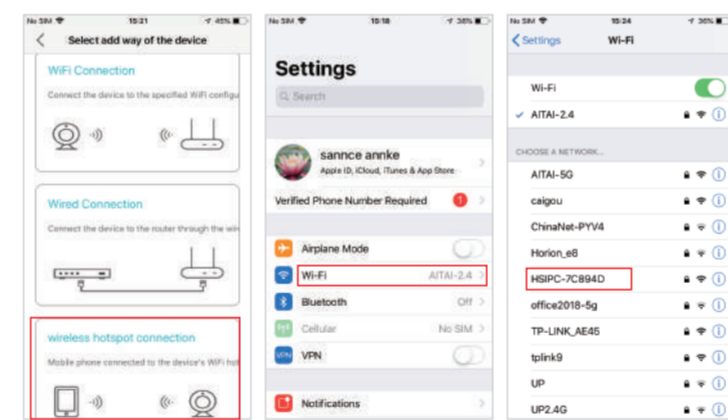


Figure 5

Figure 6

Figure 7

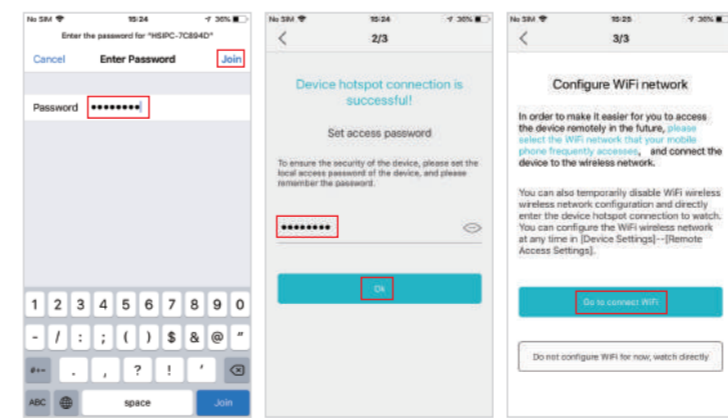


Figure 8

Figure 9

Figure 10

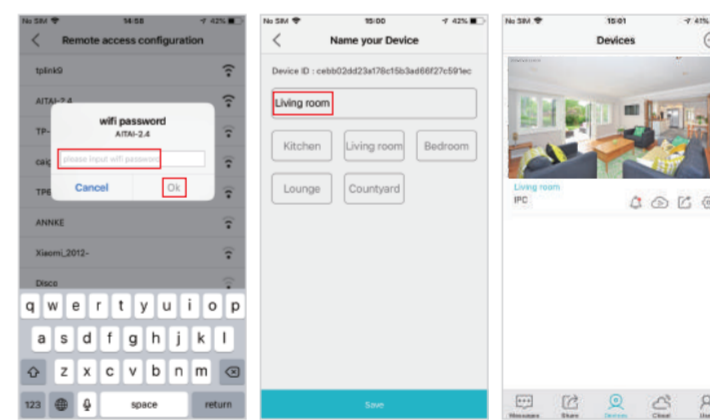
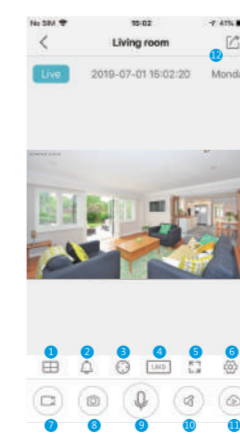


Figure 11

Figure 12

Figure 13

6. Preview Interface



- 1 Four Screens
- 2 Messages
- 3 PT Control
- 4 Video Quality
- 5 Full Screen
- 6 Setting
- 7 Record
- 8 Snapshot
- 9 Microphone
- 10 Speaker
- 11 Playback
- 12 Share

7. Contact Us

If you have any problems in using this device, please feel free to contact our customer service department or send an email to us.
 Technical Support Email: support@sannce.com



For more information, please visit:
www.sannce.com

Manufacturer: Shenzhen Kean Digital co.,Ltd.
 Address: 10th Floor, Rujun Building, No.105 Center Road, Bantian Street, Longgang District, Shenzhen, 518129, China.
 Web: www.sannce.com
 Tech Support Email : support@sannce.com

